

TAROX iron oxide

The formulation of dark brown makeup for dark skin

with BBR-309HP or BBR-305HP

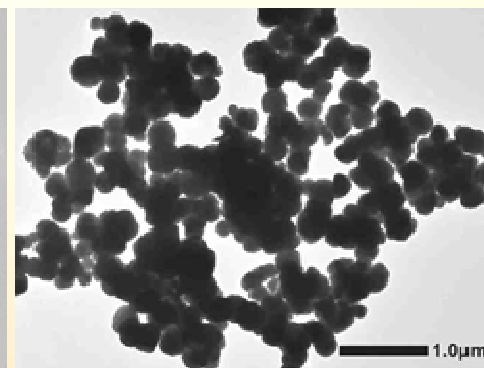
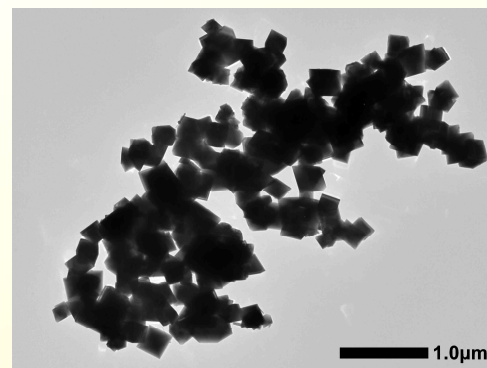
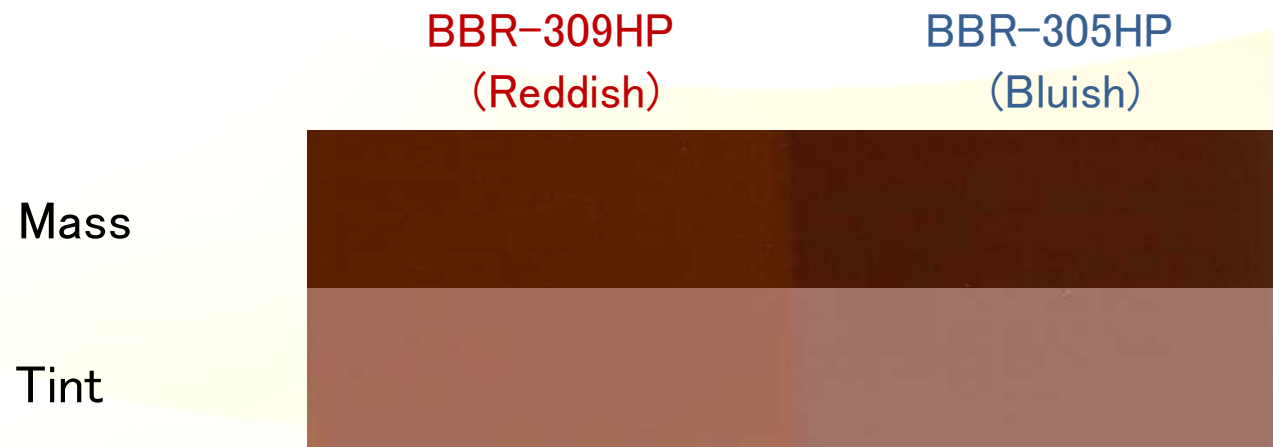


Dream materials company










Titan Kogyo ,Ltd.

Feature

- adjustable **low brightness and high chroma dark brown** by adding black iron oxide
- suitable for **the makeup and foundation for dark skin**

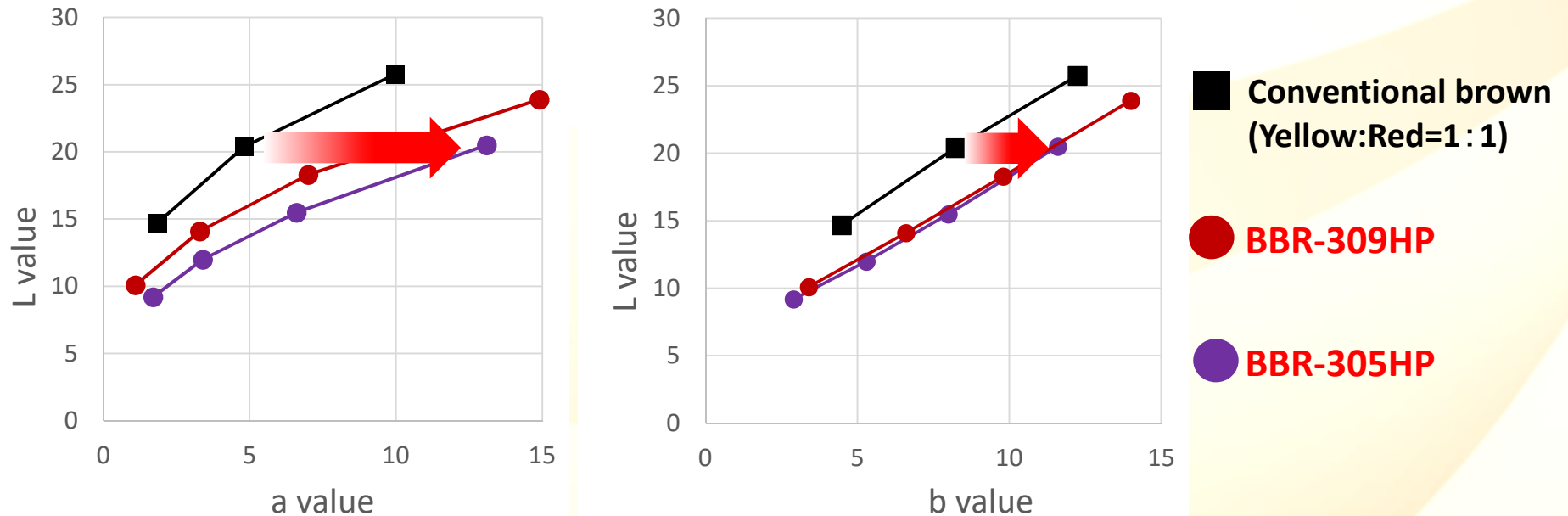


BBR series can adjust darker brown to add small amount of black!!

	Black iron oxide ratio (wt%)		
	25%	50%	75%
Conventional brown (Yellow : Red= 1 : 1)			
BBR-309HP			
BBR-305HP			

High chroma dark brown

Different brightness brown colors by adding black,
BBR series are larger a and b value than conventional brown in every L value.



※Combination with black iron oxide

Relation between "L value" and "a value" (Left graph),
"b value" (Right graph)

The dark brown made from BBR-305HP and BBR-309HP
are higher chroma!!

Examples of dark brown makeup comparison of colors

Conventional formulation (Yellow/Red/Black)

Component	Ratio	Color Pigment 60.00wt%
Yellow iron oxede	15.00	
Red iron oxede	15.00	
Black iron oxide	30.00	
Mica	30.00	
Binder	10.00	

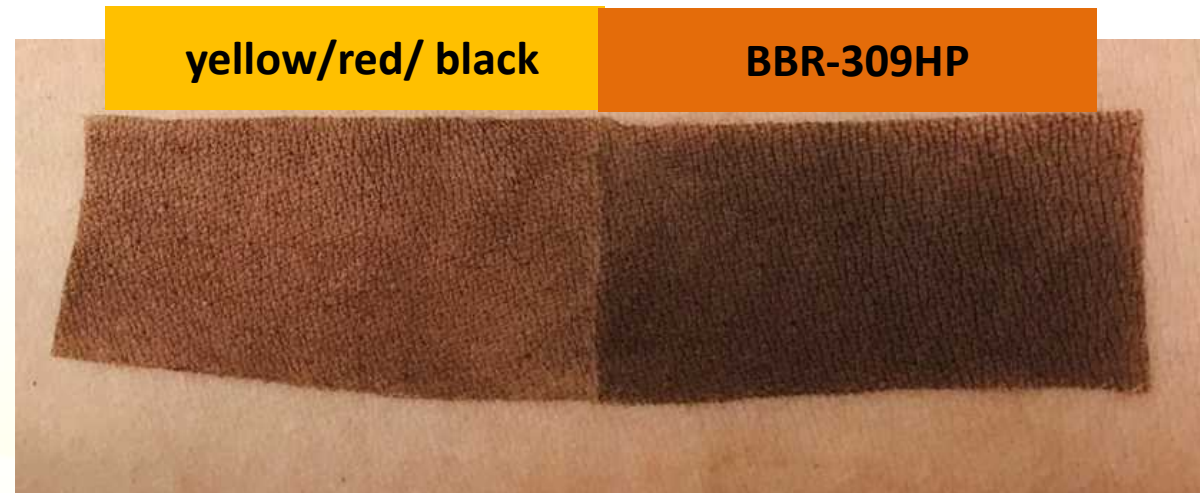


BBR-309HP formulation

Component	Ratio	Color Pigment 60.00%
BBR-309HP	30.00	
Black iron oxide	30.00	
Mica	30.00	
Binder	10.00	

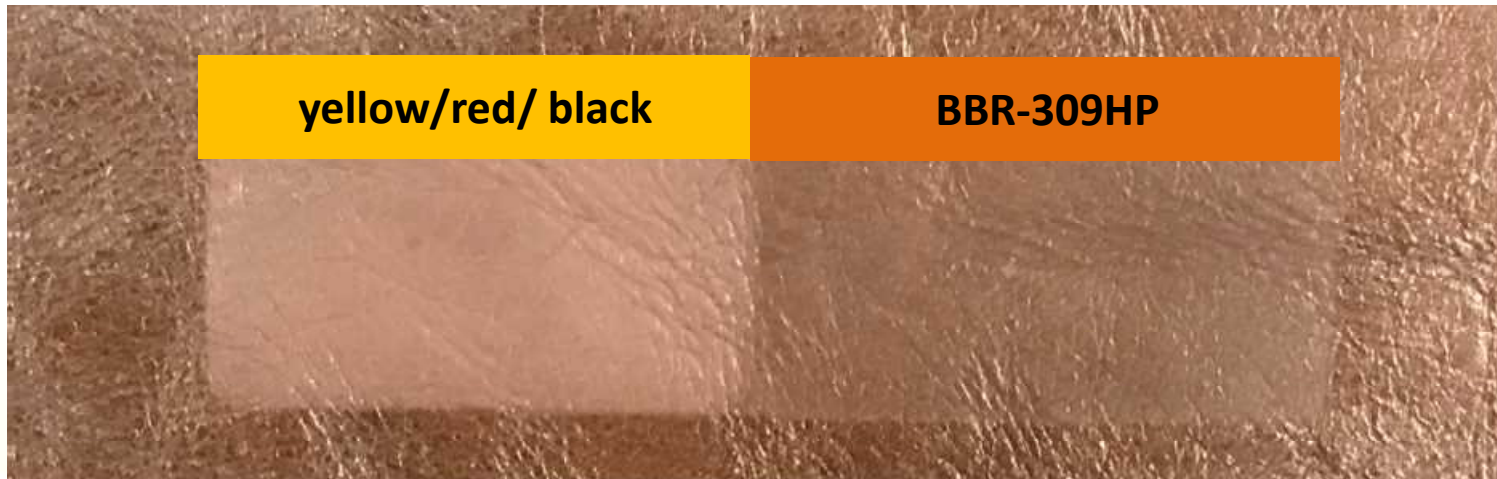


Conventional dark brown vs BBR-309HP dark brown apply to skin



BBR-309HP makeup is darker!!

Conventional dark brown vs BBR-309HP dark brown apply to natural dark leather



White cast

No white cast
match dark skin

BBR-309HP and BBR-305HP are suitable for the makeup for dark skin ! !